

Grant Sign Service, Inc. - Toronto, Ontario, Canada**Services provided:**

Keith Edwards, Pres.
 Phone: 800-667-4554
 Fax: 905-564-8217
 E-Mail: keith@grantsignservice.com
 Website: www.grantsignservice.com

Year Established: 1967
Number of Employees: 55
Satellite offices: 3
Service Area: Canada

**# 2001
 Retail Clients**
 n/a

**2001
 Retail Billings**
 n/a

Clients:
 n/a

installation
 site survey/analysis
 program mgmt.
 maintenance
 permitting
 storage
 steel sign support

Graphics Systems, Inc. - Orlando, FL

Patrice Howard, V.P.
 Phone: 407-648-5353
 Fax: 407-648-0370
 E-Mail: patriceh@gsi-signs.com
 Website: www.gsi-signs.com
Year Established: 1975
Number of Employees: 48

Satellite offices: 0
Service Area: Florida

**# 2001
 Retail Clients**
 10

**2001
 Retail Billings**
 \$4 million

Clients:
 n/a

design
 manufacturing
 installation
 program mgmt.
 permitting

Green Sign Co. - Greensburg, IN

Shawn Green, Pres.
 Phone: 812-663-2550
 Fax: 812-663-6563
 E-Mail: sales@greensignco.com
 Website: www.greensignco.com
Year Established: 1971
Number of Employees: 9
Satellite offices: 4

Service Area: nationwide

**# 2001
 Retail Clients**
 600

**2001
 Retail Billings**
 \$800,000

Clients:
 n/a

design
 manufacturing
 maintenance
 installation
 program mgmt.
 permitting
 site survey/analysis
 architectural bld.
 design and logo
 development

Ideal Shield - Detroit, MI

Chris Parenti, V.P.
 Phone: 800-731-1722
 Fax: 313-842-7860
 E-Mail: info@idealsield.com
 Website: www.idealsield.com
Year Established: 1997
Number of Employees: 50

Satellite offices: 1
Service Area: west coast

**# 2001
 Retail Clients**
 n/a

**2001
 Retail Billings**
 n/a

Clients:
 Wal-Mart;
 Sam's Club;
 Babies-R-U's;
 Home Depot;
 Meijers

manufacturing
 maintenance

Illuma Display, Inc. - Waukesha, WI

Joe Galati, Pres.
 Phone: 800-501-0128
 Fax: 262-446-9260
 E-Mail: info@illumadisplay.com
 Website: illumadisplay.com
Year Established: 1995

Number of Employees: n/a
Satellite offices: 1
Service Area: int'l

**# 2001
 Retail Clients**
 n/a

**2001
 Retail Billings**
 n/a

Clients:
 Kohl's Corp.

design
 manufacturing

Image Works/Alliance Sign Group - Ashland, VA

Emory Clotfelter, Pres.
 Phone: 804-798-5533
 Fax: 804-798-5582
 E-Mail: eclofelter@imageworks4signs.com
 Website:

www.imageworks4signs.com
Year Established: 1947
Number of Employees: 120
Satellite offices: 4

**# 2001
 Retail Clients**
 20

**2001
 Retail Billings**
 \$18 million

Clients:
 Circuit City;
 CarMax;
 Kohl's;
 Lowes

design
 manufacturing
 installation
 program mgmt.
 permitting
 site survey/analysis

Indigo Signworks - Fargo, ND

Stacey Nice, Mktg. Exec.
 Phone: n/a
 Fax: 701-297-9697
 E-Mail: tom@indigosignworks.com
 Website: indigosignworks.com
Year Established: 1996

Number of Employees: 40+
Satellite offices: 1

**# 2001
 Retail Clients**
 360+

**2001
 Retail Billings**
 \$1 million

Clients:
 Tesoro;
 Vanity;
 West Acres
 Shopping Center

design
 manufacturing
 installation
 program mgmt.
 permitting
 site survey/analysis
 maintenance

International Sign and Design Corp. - Largo, FL

Bryan D. Vaughn, Sales Mgr.
 Phone: 727-541-5573
 Fax: 727-544-7745
 E-Mail: bvaughn@intsign.com
 Website: www.intsign.com
Year Established: 1971

Number of Employees: 100
Satellite offices: 0
Service Area: int'l

**# 2001
 Retail Clients**
 31

**2001
 Retail Billings**
 \$8 million

Clients:
 Brown Shoe
 Co.;
 TJX Co. Inc.;
 Stein Mart;
 Target;
 Body Shop

design
 manufacturing
 maintenance
 installation
 program mgmt.
 permitting
 site survey/analysis

International Sign Identities (ISI) - Sherman Oaks, CA**Services provided:**

Kevin Kendall or Ross Huffman, Sales Mgrs.
 Phone: 818-779-7758
 Fax: 818-779-7705
 E-Mail: kevin@international-signidentities.com; rossh@international-signidentities.com
 Website: www.international-sign-

nidentities.com
 Year Established: 1999
 Number of Employees: 60
 Satellite offices: 2
 Service Area: nationwide

2001
 Retail Clients
 20
 2001
 Retail Billings
 \$6 million

Clients:
 Office Max;
 T-Mobile;
 KB Home;
 Nike;
 Holiday Inn;
 Sak's Fifth Ave.

design
 manufacturing
 maintenance
 installation
 program mgmt.
 permitting

site survey/analysis

Kieffer & Co., Inc. - Buffalo Grove, IL

Matt Mele, Pres.
 Phone: 847-520-1255 x250
 Fax: 847-520-1543
 E-Mail: mmele@kiefersigns.com
 Website: www.kiefersigns.com
 Year Established: 1959
 Number of Employees: 86

Satellite offices: 1
 Service Area: nationwide

2001
 Retail Clients
 16
 2001
 Retail Billings
 \$10 million

Clients:
 Walgreens;
 Blockbuster;
 Goodyear;
 Payless
 ShoeSource;
 Linens & Things

design
 manufacturing
 maintenance
 installation
 program mgmt.
 permitting

site survey/analysis

Knight Sign Industries - Tuscaloosa, AL

Cal Holt, Pres.
 Phone: 205-345-5242
 Fax: 205-752-2847
 E-Mail: cholt@knightsign.com
 Website: www.knightsign.com
 Year Established: 1965
 Number of Employees: 65

Satellite offices: 0
 Service Area: nationwide

2001
 Retail Clients
 15
 2001
 Retail Billings
 \$4.5 million

Clients:
 n/a

design
 manufacturing
 maintenance
 installation
 program mgmt.
 permitting

site survey/analysis

Lackner Sign - West Chester, OH

John Donaldson, CEO
 Phone: 513-779-8686
 Fax: n/a
 E-Mail: johnd@lacknersign.com
 Website: n/a
 Year Established: 1982

Number of Employees: 40
 Satellite offices: 1
 Service Area: 150-200 miles

2001
 Retail Clients
 500
 2001
 Retail Billings
 \$2 million

Clients:
 Kroger's;
 United Dairy
 Farmers

design
 manufacturing
 maintenance
 installation
 program mgmt.
 permitting

site survey/analysis

Lafayette Sign Co. - Little Falls, NJ

Peter A. DeAngelo, Pres.
 Phone: 973-812-5000
 Fax: 973-812-8222
 E-Mail: pad@lafayettesign.com
 Website: www.lafayettesign.com
 Year Established: 1944
 Number of Employees: 15

Satellite offices: 0
 Service Area: Northeast

2001
 Retail Clients
 n/a
 2001
 Retail Billings
 n/a

Clients:
 n/a

design
 manufacturing
 maintenance
 installation
 program mgmt.
 permitting

site survey/analysis

Lewis Sign Co. - Slate Hill, NY

Chris Lewis, Operations Mgr.
 Phone: 845-355-2651
 Fax: 845-355-8249
 E-Mail: lewisigns@citilink.net
 Website: www.lewisigns.com
 Year Established: 1924

Number of Employees: 8
 Satellite offices: 1
 Service Area: Hudson Valley,
 NY

2001
 Retail Clients
 150
 2001
 Retail Billings
 \$300,000

Clients:
 Pepsi;
 Wendy's;
 ShopRite

design
 manufacturing
 maintenance
 installation
 permitting
 site survey/analysis

Mayhew Signs & Awnings - Grand Island, NE

Ray Mayhew, CEO
 Phone: 308-387-7230
 Fax: 308-387-7100
 E-Mail: sale@mayhewsigns.com
 Website: mayhewsigns.com
 Year Established: 1988
 Number of Employees: 25

Satellite offices: 0
 Service Area: 150 miles of
 Grand Island

2001
 Retail Clients
 1000
 2001
 Retail Billings
 \$1.2 million

Clients:
 shopping centers;
 banks;
 general retail
 stores;
 restaurants

design
 installation
 site survey/analysis
 manufacturing
 program mgmt.
 maintenance
 permitting

digital large printing graphics

MC Sign Company - Mentor, OH

Bob Taylor, Account Mgr.
 Phone: 724-217-1869
 Fax: 440-953-2285
 E-Mail: bobt@mcsign.com
 Website: www.mcsign.com
 Year Established: 1953
 Number of Employees: 60
 Satellite offices: 6

Service Area: US, Canada,
 Puerto Rico

2001
 Retail Clients
 n/a
 2001
 Retail Billings
 n/a

Clients:
 n/a

design
 installation
 site survey/analysis
 manufacturing
 program mgmt.
 maintenance

permitting

Mitchell Signs - Meridian, MS**Services provided:**

Rick Courtney, V.P.
Phone: 601-553-1512
Fax: 601-482-7474
E-Mail:
 rick@mitchellcompanies.com
Website: www.mitchellcompanies.com

Year Established: 1985
Number of Employees: 80
Satellite offices: 0
Service Area: nationwide

**# 2001
 Retail Clients**
 15

**2001
 Retail Billings**
 \$4 million

Clients:
 First TN Bank;
 Pure Oil;
 Super Stop;
 Peabody hotels;
 Budweiser

design
 installation
 site survey/analysis
 manufacturing
 program mgmt.
 maintenance
 permitting

Nationwide Sign Services, Inc. - Springfield, PA

Frank Hughes, Pres.
Phone: 888-234-5300
Fax: 610-328-3555
E-Mail: frank@nation-
 widedesignservice.com
Website: n/a
Year Established: 1999

Number of Employees: 4
Satellite offices: 0
Service Area: US, Canada

**# 2001
 Retail Clients**
 n/a

**2001
 Retail Billings**
 n/a

Clients:
 Michael's Stores;
 Shoe Show;
 Shoe Carnival;
 Goody's Family
 Clothing

maintenance

Pacific Sign Construction, Inc. - Poway, CA

Roy Flahive, Pres.
Phone: 858-486-8006
Fax: 858-486-8019
E-Mail:
 flahive@pacificsign.com
Website: n/a
Year Established: 1955

Number of Employees: 12
Satellite offices: 0
Service Area: southern
 California

**# 2001
 Retail Clients**
 270

**2001
 Retail Billings**
 \$1.2 million

Clients:
 n/a

design
 installation
 site survey/analysis
 manufacturing
 program mgmt.
 maintenance
 permitting

Pan Sign Wholesale, Inc. - Lancaster, CA

Mary T. Olmedo, V.P.
Phone: 866-942-PANI; 661-942-
 7267
Fax: 661-940-8050
E-Mail: pansigns01@aol.com
Website: pansignwholesale.com
Year Established: 1999

Number of Employees: 9
Satellite offices: 1
Service Area: nationwide

**# 2001
 Retail Clients**
 75

**2001
 Retail Billings**
 \$1.2 million

Clients:
 Washington
 Mutual;
 various restau-
 rants and hotels;
 Subway

design
 site survey/analysis
 manufacturing
 program mgmt.
 permitting

Pattison Sign Group - Vancouver, British Columbia, Canada

**Warren Perrott, Dir. of New
 Business Development**
Phone: 604-215-5526
Fax: 604-215-0696
E-Mail:
 wperrott@pattisonsign.com
Website: n/a

Year Established: 1928
Number of Employees: 800
Satellite offices: 23
Service Area: North America

**# 2001
 Retail Clients**
 50+

**2001
 Retail Billings**
 \$100 million

Clients:
 Starbucks;
 McDonalds
 General Motors
 Ford
 Best Western

design
 installation
 site survey/analysis
 manufacturing
 program mgmt.
 maintenance
 permitting

Plasti-Line - Powell, TN

Brian Lucas, Sales
Phone: 865-938-1511
Fax: 865-947-8431
E-Mail: blucas@plasti-line.com
Website: www.plasti-line.com
Year Established: 1944
Number of Employees: 1000

Satellite offices: 4
Service Area: nationwide

**# 2001
 Retail Clients**
 27

**2001
 Retail Billings**
 \$20 million

Clients:
 CVS;
 H&R Block;
 Dollar General;
 K-Mart

design
 installation
 site survey/analysis
 manufacturing
 program mgmt.
 maintenance
 permitting
 architectural
 POP
 POS

PWN Electronic Price Signs, Inc. - Houston, TX

Max Krawinkel, Pres.
Phone: 713-290-0626
Fax: 713-290-0699
E-Mail: maxk@p-w-n.com
Website: www.p-w-n.com
Year Established: 1999
Number of Employees: 12

Satellite offices: 14
Service Area: nationwide

**# 2001
 Retail Clients**
 2

**2001
 Retail Billings**
 \$3 million

Clients:
 all major oil
 companies and
 leading c-stores

manufacturing

Quantum Graphics - Alsip, IL

Ken Bucyck, Pres.
Phone: 708-824-2525
Fax: 708-824-2531
E-Mail: info@quantumsigns.net
Website: www.quantumsigns.net
Year Established: 1989
Number of Employees: 15
Satellite offices: 0

Service Area: nationwide

**# 2001
 Retail Clients**
 75

**2001
 Retail Billings**
 \$1.5 million

Clients:
 A&E Stores;
 Autozone;
 Lifetime
 Fitness;
 Burger King

design
 manufacturing
 maintenance
 installation
 program mgmt.
 site survey/analysis

Retail Services Group, Inc. - Palatine, IL**Services provided:**

Brian J. Zgonia
Phone: 847-202-1800
Fax: 847-202-1881
E-Mail: brian@rsgservices.com
Website: www.rsgservices.com
Year Established: 1997
Number of Employees: n/a

Satellite offices: n/a
Service Area: nationwide

**# 2001
 Retail Clients**
 n/a

**2001
 Retail Billings**
 n/a

Clients:
 n/a

installation
 site survey/analysis
 program mgmt.
 maintenance
 permitting

Retailworks, Inc. - Cedarburg, WI

Lyn Folk, Pres.
Phone: 262-376-0244
Fax: 262-376-0255
E-Mail: solutions@retail-worksinc.com
Website:
 www.retailworksinc.com

Year Established: 1995
Number of Employees: 6
Satellite offices: 1
Service Area: n/a

**# 2001
 Retail Clients**
 n/a

**2001
 Retail Billings**
 \$50,000

Clients:
 Miller Brewing
 Co.-Milwaukee,
 WI;
 Kirdham's
 Outdoor Products
 - Salt Lake City

design
 installation

Roland's Neon Signs - Windsor, Ontario, Canada

Maurice Pomeleau, Sales
Phone: 519-944-6446
Fax: 519-944-2942
E-Mail: maurice@rolands-
 neon.com
Website:
 www.rolandsneon.com

Year Established: 1957
Number of Employees: 20
Satellite offices: 1
Service Area: eastern U.S. and
 Canada

**# 2001
 Retail Clients**
 10 chains, 100
 single locations

**2001
 Retail Billings**
 \$1.4 million

Clients:
 Weight Watchers;
 Liz Claiborne;
 Wright & Filippis;
 Shoppers Drug
 Mart;
 Hiram Walkers

design
 installation
 site survey/analysis
 manufacturing

Ross Lewis Sign Co. - Bemidji, MN

Ross Lewis, CEO
Phone: 218-751-1204
Fax: 218-751-0451
E-Mail: n/a
Website: n/a
Year Established: 1989
Number of Employees: 6

Satellite offices: 0
Service Area: 125 mile radius

**# 2001
 Retail Clients**
 450

**2001
 Retail Billings**
 \$700,000

Clients:
 n/a

design
 installation
 site survey/analysis
 manufacturing
 maintenance
 permitting

Scott Sign Systems, Inc. - Sarasota, FL

**David W. Sparks, Ret. Div.
 Mgr.**
Phone: 800-237-9447
Fax: 941-351-1787
E-Mail: mail@scottsigns.com
Website: www.scottsigns.com
Year Established: 1957

Number of Employees: 100
Satellite offices: 0
Service Area: nationwide

**# 2001
 Retail Clients**
 200+

**2001
 Retail Billings**
 n/a

Clients:
 JC Penney;
 Eckerd;
 K-Mart;
 Wal-Mart;
 Publix
 SuperMarkets

manufacturing

Security Signs - Portland, OR

C.L. Keljo, Owner
Phone: 503-2332-4172
Fax: 503-230-1861
E-Mail: ckeljo@securitysigns
Website:
 www.securitysigns.com
Year Established: 1925

Number of Employees: 20
Satellite offices: 1

**# 2001
 Retail Clients**
 30

**2001
 Retail Billings**
 \$1 million

Clients:
 n/a

design
 installation
 site survey/analysis
 manufacturing
 program mgmt.
 maintenance

permitting
 service

Sign Engineering Corp. - San Juan, Puerto Rico

Harold Pedley, Pres.
Phone: 787-783-1330
Fax: 787-782-2825
E-Mail: haroldp@signeng.com
Website: www.signeng.net
Year Established: 1967
Number of Employees: 75

Satellite offices: 0
Service Area: Puerto Rico, US
 Virgin Islands

**# 2001
 Retail Clients**
 100

**2001
 Retail Billings**
 \$6 million

Clients:
 McDonald's;
 Citibank;
 Wendy's;
 Wal-Mart;
 Walgreen's;

design
 installation
 site survey/analysis
 manufacturing
 program mgmt.
 maintenance

permitting

Sign Mart, Inc. - Rockville, MD

Max Aronow, Pres.
Phone: 301-468-1132
Fax: 301-230-9048
E-Mail: max@signmartinc.com
Website: www.signmartinc.com
Year Established: 1989
Number of Employees: 10

Satellite offices: 0
Service Area: Washington DC,
 VA, MD

**# 2001
 Retail Clients**
 n/a

**2001
 Retail Billings**
 n/a

Clients:
 n/a

manufacturing

Sign Tech International - Austin, TX

Services provided:

Robert McDonald, Co-Owner
Phone: 512-494-0002
Fax: 512-494-0003
E-Mail: robert@signtechinternational.net

Website: www.signtechinternational.net
Year Established: 1997
Number of Employees: 24
Satellite offices: 0
Service Area: nationwide

2001
Retail Clients
225

2001
Retail Billings
\$3 million

Clients:
Family Christian Stores;
Omaha Steaks;
Uncle Bob's Storage;
Gold's Gym

design
installation
site survey/analysis
manufacturing
program mgmt.
maintenance
permitting

Simmons Sign Company - Rainbow City, AZ

Thomas L. Simmons III, Owner
Phone: 256-413-7446
Fax: 256-413-7438
E-Mail: t35sign@earthlink.net
Website: n/a
Year Established: 1996

Number of Employees: 5
Satellite offices: 1

2001
Retail Clients
n/a

2001
Retail Billings
n/a

Clients:
n/a

design
installation
site survey/analysis
manufacturing
maintenance
permitting

Stout Industries - St. Louis, MO

Len Ball, Mgr. Imaging Systems
Phone: 314-679-1302
Fax: 314-679-1380
E-Mail: len_ball@stoutmarketing.com
Website: www.stoutmarket-

ing.com
Year Established: 1887
Number of Employees: 105
Satellite offices: 0
Service Area: nationwide

2001
Retail Clients
100+

2001
Retail Billings
\$12 million

Clients:
Exxon Mobil;
Shell

design
installation
site survey/analysis
manufacturing
maintenance
permitting
program mgmt.

Sunset Neon Ltd. - Burlington, Ontario, Canada

david Carley, Pres.
Phone: 905-639-1832
Fax: 905-639-7132
E-Mail: dcarley@sunsetneon.com
Website: www.sunsetneon.com
Year Established: 1982
Number of Employees: 28
Satellite offices: 0

Service Area: North America

2001
Retail Clients
9

2001
Retail Billings
\$3 million

Clients:
n/a

design
installation
site survey/analysis
manufacturing
maintenance
permitting

program mgmt.

Swirling Silks, Inc. - Skippack, PA

Rolly Cornish, Pres.
Phone: 610-584-5595
Fax: 610-584-6775
E-Mail: sales@swirlingsilks.com
Website: www.swirlingsilks.com
Year Established: 1990
Number of Employees: 10

Satellite offices: 2
Service Area: nationwide

2001
Retail Clients
n/a

2001
Retail Billings
n/a

Clients:
n/a

design
installation
site survey/analysis
manufacturing
maintenance
permitting

program mgmt.

Symmetry Products Group - Lincoln, RI

Steven Lancia, Pres.
Phone: 401-365-6272
Fax: 401-365-6273
E-Mail: fmkmtg@sds.net
Website: www.symmetryproducts.com
Year Established: 1981

Number of Employees: 125
Satellite offices: 2
Service Area: international

2001
Retail Clients
25

2001
Retail Billings
\$100,000s

Clients:
Toys"R"Us;
Kids"R"Us;
Babies"R"Us;
The Picture People;
Nine West

design
installation
manufacturing

Tako & Tyko Sign Co. - La Tolla, CA

Leon, Chairman of the Board
Phone: 818-775-0367
Fax: 818-551-8374
E-Mail: leon@tri.net
Website: www.takotyko.com
Year Established: 1980

Number of Employees: 15
Satellite offices: 1
Service Area: south CA, San Diego, Los Angeles & surroundings

2001
Retail Clients
4

2001
Retail Billings
\$1 million

Clients:
Marvins;
Toys"R"Us;
Holiday Inn;
El Taco Loco

design
installation
site survey/analysis
manufacturing
program mgmt.
maintenance

permitting

Talley Sign Company, Inc. - Richmond, VA

Ed Doyle, Pres.
Phone: 804-649-0825
Fax: 804-643-1721
E-Mail: talley.sign@verizon.net
Website: n/a
Year Established: 1933
Number of Employees: 42

Satellite offices: 0
Service Area: mid Atlantic and south

2001
Retail Clients
3

2001
Retail Billings
n/a

Clients:
n/a

design
installation
site survey/analysis
manufacturing
program mgmt.
maintenance

permitting

USA Signs of America, Inc. - Farmingdale, NY

Services provided:

Martha L. Reese, V.P./Sales
 Phone: 631-694-9700
 Fax: 631-694-6479
 E-Mail: marthareese@atl.net
 Website: n/a
 Year Established: 1975
 Number of Employees: 73

Satellite offices: 5
 Service Area: nationwide

2001
 Retail Clients
 50

2001
 Retail Billings
 \$8 million

Clients:
 Fields Cookies,
 Clothestine;
 Bebe;
 Ace Hardware;
 Target;
 Lowe's

design
 installation
 site survey/analysis
 manufacturing
 program mgmt.
 maintenance
 permitting

Warner Bros. Studio Facilities Sign Shop - Burbank, CA

Ron Stansberry, Mgr.
 Phone: 818-954-1815
 Fax: 818-954-2806
 E-Mail: wbsigns@warnerbros.com
 Website: www.wbsfconstruc-
 tionservices.com

Year Established: n/a
 Number of Employees: 8-15
 Satellite offices: 0
 Service Area: nationwide

2001
 Retail Clients
 3

2001
 Retail Billings
 n/a

Clients:
 n/a

design
 installation
 site survey/analysis
 manufacturing

Williams Signworks - Cookersville, IN

Iora Williams, Co-Owner
 Phone: 931-526-4359
 Fax: 931-528-2483
 E-Mail: n/a
 Website: n/a
 Year Established: 1989
 Number of Employees: 8

Satellite offices: 0
 Service Area: 250 mile radius

2001
 Retail Clients
 n/a

2001
 Retail Billings
 n/a

Clients:
 n/a

design
 installation
 site survey/analysis
 manufacturing
 program mgmt.
 maintenance
 permitting

Zimmerman Sign Company - Tyler, TX

Tim Smith, Mktg. Coord.
 Phone: 903-535-7464
 Fax: 903-535-7401
 E-Mail: tsmith@zimsign.com
 Website: www.zimmerman.com
 Year Established: 1901
 Number of Employees: 450

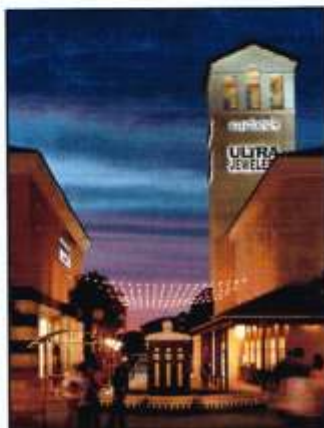
Satellite offices: 2
 Service Area: nationwide

2001
 Retail Clients
 9

2001
 Retail Billings
 \$1 million

Clients:
 Trane/America
 Standard;
 O'Reilly Auto
 Paris;
 Edward Jones

design
 installation
 site survey/analysis
 manufacturing
 program mgmt.
 maintenance
 permitting



RAISING EXPECTATIONS
 AND BUILDINGS
 FOR OVER 50 YEARS

HARDIN CONSTRUCTION COMPANY, LLC | ATLANTA * TAMPA * ORLANDO * JACKSONVILLE | www.hardinconstruction.com

Circle No. 24

Total Identity Group - Rochester, NY

Services provided:

Larry Newton, Sales Mgr.
 Phone: 585-427-9050
 Fax: 585-427-9051
 E-Mail: lanewton@totalidentity.com
 Website: www.totalidentity.com
 Year Established: 1928

Number of Employees: 100
Satellite offices: 4
Service Area: n/a

**# 2001
 Retail Clients:** 20
**2001
 Retail Billings:** \$3-4 million

Clients: Applebee's; Verizon Wireless; Cinemark USA; McDonalds; Sports Authority

design
 installation
 site survey/analysis
 manufacturing
 program mgmt.
 maintenance
 permitting

Touch Network - Plano, TX

Jason Lickliter, CEO
 Phone: 972-814-7379
 Fax: 972-390-1908
 E-Mail: jason.lickliter@touch-network.com
 Website: www.touchnetwork.com

Year Established: 1999
Number of Employees: 725
Satellite offices: 2

**# 2001
 Retail Clients:** n/a
**2001
 Retail Billings:** n/a

Clients: n/a

design
 installation
 site survey/analysis
 manufacturing
 program mgmt.
 maintenance

permitting

Transcontinental Printing - Winnipeg, MB, Canada

Bill Holte, Mktg. Mgr.
 Phone: 204-988-1760
 Fax: 204-988-1756
 E-Mail: n/a
 Website: n/a
 Year Established: n/a
 Number of Employees: 73
 Satellite offices: 3

Service Area: North America

**# 2001
 Retail Clients:** 10
**2001
 Retail Billings:** n/a

Clients: Best Buy; Shopping Drugmart; Federated Co-op Ltd. Grocers

design
 installation
 manufacturing
 program mgmt.
 maintenance

Trans-Lux - Logan, UT

Chris Merrill, Mktg. V.P.
 Phone: 800-543-7904
 Fax: 435-753-2975
 E-Mail: sales@ise-tlx.com
 Website: www.ise-tlx.com
 Year Established: 1920
 Number of Employees: 632

Satellite offices: 8
Service Area: N. America

**# 2001
 Retail Clients:** 1000+
**2001
 Retail Billings:** n/a

Clients: n/a

design
 installation
 site survey/analysis
 manufacturing
 program mgmt.
 maintenance

permitting

We Are Not Magicians, But You Will Think We Are!
 We Design and Manufacture All Types of Signs.

**WE SHIP SIGNS
 NATIONWIDE!**

Visit
www.takotyko.com
 for more info on
 ordering your sign!



SAN DIEGO
 LOS ANGELES
 VENTURA

5010 Venice Blvd.
 Los Angeles, CA 90019
 800.731.6012



Design | Permits | Project Management | Installation | Repair | Engineering | Manufacturing

Circle No. 21

Now a Permanent Fixture on the Web!

VMSWritePrice.com The one-stop way to write the right price & save on all of your retail store fixtures!

Step 1: Click the **WRITE PRICE!** button on our home page to access our online price request form. Simply list what you need and what you want to pay.

Step 2: Submit the request. In a short time you will receive an email confirmation on your order and pricing on the items that you need.

Step 3: Follow the email link to our online order form, complete the fields, and submit your order... It's that simple!

www.VMSWritePrice.com

Check Us Out Today!
 Free shipping on all orders over \$1,000!



2260 Paragon Dr. • San Jose, CA 95131
 Toll Free 866.421.4950 • Phone 408.436.1961 • Fax 408.453.1961

Circle No. 22 Member of The Retail People®